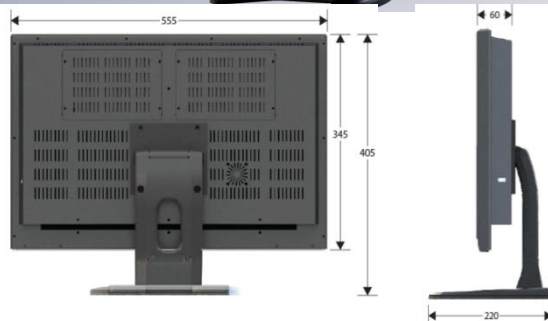


# All In One HD-NVR (PoE)

## SJ-2300 Series

### HD-NVR with Built-in PoE (Max 8Ch)



- Full HD 23inch LED Monitor & HDMI Video Output Support
- VGA Input Port Support (Possible to connect the PC)
- Plug & Play with Built-in PoE (Max. 8ch)
- ONVIF Compatible & Auto IP Camera Detection
- Intelligent Dual(Main & Sub) Stream Recording/Display
- ezP2P™ Cloud Service without any complicated network setting
- ezLink™ for Instant Live Monitoring with Mac Address Input
- PUSH Notification to iPhone/iPad & Android Phone
- POS Function up to 4 sets of POS Devices
- Remote Monitoring by Remote S/W(CMS) & Smart Phone

MODEL		SJ-2304HN (4Ch + 5Ch)	SJ-2308HN (8Ch + 1Ch)	SJ-2316HN (8Ch + 8Ch)
Max. HDD Bay		1 x SATA HDD	2 x SATA HDD	4 x SATA HDD
Operating System		Embedded Linux		
IP Camera	Channel-PoE	4 Ch	8 Ch	8 Ch
	Protocol	FOCUS, ONVIF		
	None PoE	5 Ch	1 Ch	8 Ch
	PoE Type	100Mbps, 802.3af		
Display	Speed	270fps	270fps	480fps
	Screen Mode	1 & 4	1, 4 & 9	1, 4, 9 & 16
Video-In		IP Camera (Max. 2.1Megapixel, 1080P)		
Video-Out	Monitor	Composite & VGA & HDMI		
	Resolution	HDMI: 800x600, 1024x768, 1280x1024, 1920x1080 (Selectable)		
Recording Speed	CIF	270fps	270fps	480fps
	D1	270fps	270fps	480fps
	720P	270fps	270fps	480fps
	1080P	270fps	270fps	480fps
Recording Resolution		Main Stream(up to 2.1MP) & Sub Stream		
Recording Modes		Continuous, Scheduled, Sensor-Activated & Motion Detection Recording Pre & Post Alarm Recording, Emergency Recording, Quick Backup		
Playback & Search	Speed	x1, x2, x4, x8, x16, x32		
	Ch & Resolution	1 & 4 : Main Stream, 9 & 16 : Sub Stream		
	Function	Intelli-Search by Time Bar, Calendar (Date & Time) and Event Search		
Audio Input / Output		1 Ch / 1 Ch		
Alarm Input / Relay Output		4 Ch / 1 Ch		
P/T/Z Control		RS-485, ONVIF		
LAN		Gigabit Ethernet (RJ45) - Fixed IP, DHCP & DDNS		
Network Function		1) Dual-Stream (Local Recording & Network Transmission) 2) Dual-Recording(Live Display / Playback) 3) Live Monitoring, Remote Playback and File Backup (Triplex-on-Remote) 4) Time Synchronization by NTP Server ("pool.ntp.org") 5) Remote & E-Mail Notification, Remote System Reboot by IE, Remote PTZ Control 6) P2P Cloud Service (Auto Port forwarding)		
Remote Management	Software	CMS & MMS (MobileViewerPro)		
	Web (IE)	Live Monitoring, Playback & System Configuration		
Backup Device		Local Backup by USB ODD, Network Backup by CMS, File Upload to FTP Server		
System Recovery after Power Failure		Auto-Reboot and Journaling File System		
Advanced Functions		1) Firmware Upgrade by USB & CMS over Network 2) Import & Export of Setting Value, Water-Mark, AVI File Backup 3) Quick Setup to designate Recording Period 4) HDD SMART Info (Model, Capacity, Bad Sector, Temperature, Used Period) 5) Warning Alarm for System Over-Temperature 6) Help Message for easy setup & Multi-Language support 7) Digital Zoom for both Live & VOD mode		
POS		Text-in Based (USB to Serial support, TCP/IP Network)		
System Operation		Front Button, IR Remote Controller, USB Mouse, Keyboard (Option)		
Power		48V x 2.5A D/C	48V x 3.3A D/C	48V x 4.2A D/C
Operating Temperature and Humidity		5~40 °C / 20~90% RH		
Dimension (WxDxH)		595 x 405 x 60 (mm)		
Certification		CE & FCC & KCC & WEEE, RoHS		

# HD-NVR (PoE)

## SJ-6200 Series

### HD-NVR with Built-in PoE (Max 8Ch)



- **Plug & Play with Built-in PoE** (Max. 8ch)
- **ONVIF Compatible & Auto IP Camera Detection**
- **Intelligent Dual(Main & Sub) Stream Recording/Display**
- **ezP2P™** Cloud Service without any complicated network setting
- **ezLink™** for Instant Live Monitoring with Mac Address Input
- PUSH Notification to iPhone/iPad & Android Phone
- **POS Function** up to 4 sets of POS Devices
- Remote Monitoring by Remote S/W(CMS) & Smart Phone



[SJ-6204P]



[SJ-6208/6216P]

MODEL		SJ-6204P (4Ch + 5Ch)	SJ-6208P (8Ch + 1Ch)	SJ-6216P (8Ch + 8Ch)
Max. HDD Bay		1 x SATA HDD	2 x SATA HDD	4 x SATA HDD
Operating System		Embedded Linux		
IP Camera	Channel-PoE	4 Ch	8 Ch	8 Ch
	Protocol	FOCUS, ONVIF		
	None PoE	5 Ch	1 Ch	8 Ch
	PoE Type	100Mbps, 802.3af		
Display	Speed	270fps	270fps	480fps
	Screen Mode	1 & 4	1, 4 & 9	1, 4, 9 & 16
Video-In		IP Camera (Max. 2.1Megapixel, 1080P)		
Video-Out	Monitor	Composite & VGA & HDMI		
	Resolution	HDMI: 800x600, 1024x768, 1280x1024, 1920x1080 (Selectable)		
Recording Speed	CIF	270fps	270fps	480fps
	D1	270fps	270fps	480fps
	720P	270fps	270fps	480fps
	1080P	270fps	270fps	480fps
Recording Resolution		Main Stream(up to 2.1MP) & Sub Stream		
Recording Modes		Continuous, Scheduled, Sensor-Activated & Motion Detection Recording Pre & Post Alarm Recording, Emergency Recording, Quick Backup		
Playback & Search	Speed	x1, x2, x4, x8, x16, x32		
	Ch & Resolution	1 & 4 : Main Stream, 9 & 16 : Sub Stream		
	Function	Intelli-Search by Time Bar, Calendar (Date & Time) and Event Search		
Audio Input / Output		1 Ch / 1 Ch		
Alarm Input / Relay Output		4 Ch / 1 Ch		
P/T/Z Control		RS-485, ONVIF		
LAN		Gigabit Ethernet (RJ45) - Fixed IP, DHCP & DDNS		
Network Function		1) Dual-Stream (Local Recording & Network Transmission) 2) Dual-Recording(Live Display / Playback) 3) Live Monitoring, Remote Playback and File Backup (Triplex-on-Remote) 4) Time Synchronization by NTP Server ("pool.ntp.org") 5) Remote & E-Mail Notification, Remote System Reboot by IE, Remote PTZ Control 6) P2P Cloud Service (Auto Port forwarding)		
Remote Management	Software	CMS & MMS (MobileViewerPro)		
	Web (IE)	Live Monitoring, Playback & System Configuration		
Backup Device		Local Backup by USB ODD, Network Backup by CMS, File Upload to FTP Server		
System Recovery after Power Failure		Auto-Reboot and Journaling File System		
Advanced Functions		1) Firmware Upgrade by USB & CMS over Network 2) Import & Export of Setting Value, Water-Mark, AVI File Backup 3) Quick Setup to designate Recording Period 4) HDD SMART Info (Model, Capacity, Bad Sector, Temperature, Used Period) 5) Warning Alarm for System Over-Temperature 6) Help Message for easy setup & Multi-Language support 7) Digital Zoom for both Live & VOD mode		
POS		Text-in Based (USB to Serial support, TCP/IP Network)		
System Operation		Front Button, IR Remote Controller, USB Mouse, Keyboard (Option)		
Power		48V x 2.5A D/C	48V x 3.3A D/C	48V x 4.2A D/C
Operating Temperature and Humidity		5~40 °C / 20~90% RH		
Dimension (WxDxH)		264 x 245 x 44 (mm)	360 x 380 x 66 (mm)	
Certification		CE & FCC & KCC & WEEE, RoHS		

(\* ) Specification is subject to change without prior notice.

# ezP2P™ Cloud Service (www.ezp2p.com)

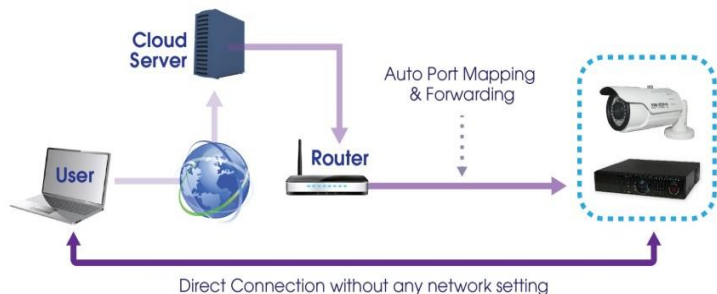
ezP2P™ Cloud Service is a cloud-based video management system without any complicated network setting. Just login to ezP2P™ Cloud Server (www.ezp2p.com) with your own account and enjoy thumbnail preview and instant live monitoring.



[Main Page]



[Preview]



## ezLink™ with Mac Address

The easiest way to connect to the DVR just by Mac Address.



## Drag & Drop Camera Connection

IP Camera can be assigned to channel by simple drag & drop operation. User doesn't need to inconvenient camera assignment setting.

## Intelligent Dual(Main & Sub) Stream Recording/Display

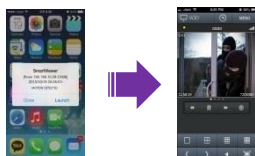
Intelligent Dual Stream Recording/Display provides seamless and stable display at both live & playback.

- 1 & 4ch : Main Stream live/playback display
- 9 & 16ch : Sub Stream live/playback display

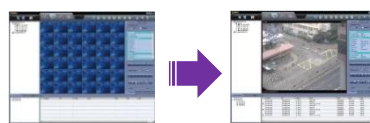
## Typical PUSH Function

2 PUSH Functions below provides you with efficient monitoring and control of your DVR. It allows you to be free from constant attention to the event that may or may not happen.

**PUSH Video Call**  
to iPhone & Android Phone



**PUSH Network**  
Connection under Sensor Event



## Integrated Network Solution

Guarantee unlimited scalability and seamless integration of all FOCUS products such as DVR, NVR & IP Camera over unique network.



[CMS]



[MobileViewerPro]